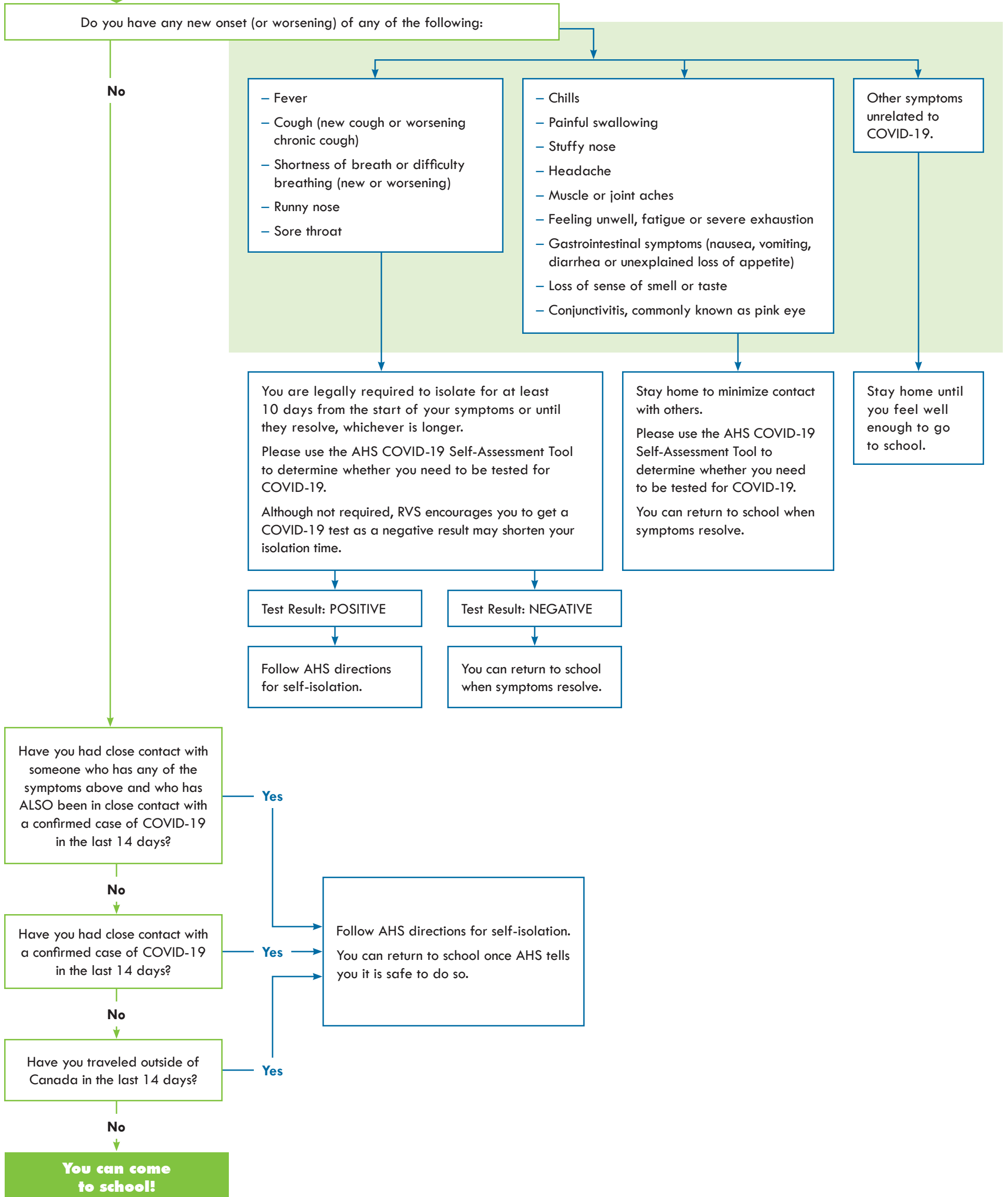


# Should I go to school today?

To help keep everyone safe, RVS students are required to complete the COVID-19 Alberta Health Daily Checklist to determine if they should attend school. If you are ill, have come into contact with someone who is or have traveled recently, please refer to this guide to help you safely return to school.

**START**



## Definitions/Notes:

**Close Contact** – provides care, lives with or has close physical contact without appropriate use of PPE, or comes into direct contact with infectious bodily fluids.

Individuals who have allergies or ongoing health issues must be tested at least once according to the [AHS Guidance document](#). This will establish a baseline for the individual. If symptoms change (worsen, additional symptom, change in baseline) the individual must stay at home and use the [COVID-19 Self-Assessment Tool](#) to determine whether they need to be tested for COVID-19.