



EAMS Re-Entry Plan: Scenario 1 - Updated Sept. 1st

EAMS follows the RVS Scenario 1 Re-Entry Protocol and AHS Guidelines with the following site-specific protocols. Please find below the guidelines and procedures for school re-entry as of September 1st, 2020. Key points of important daily routines can be found at the end of this document in *****Appendix A – School Daily Practices*****.

Daily Health Check Protocol:

- It is the responsibility of the parent/guardian to ensure a daily health check protocol is completed at home before the child leaves for school each day.
- We currently do not require copies of these completed daily health check forms to be provided to the school.
- If you answer YES to any of the questions, please stay at home. Please reach out to Health Link and get cleared before returning to school.
- Self-assessments must be conducted by all authorized visitors (parents and guardians) and will be posted at the main door.
- You can access it here: [Daily Health Check Protocol](#)

Staggered Entry - September 2-4, 2020:

- In collaboration with Ecole Edwards and George McDougall High School, we have selected the following way of scheduling the staggered entry to allow families to send their children on the same day:
 - Wednesday, September 2nd: Students with last names **A to F** (inclusive) only (9:05am-3:35pm).
 - Thursday, September 3rd: Students with last names **G to N** (inclusive) only (9:05am-3:35pm).
 - Friday, September 4th: Students with last names **O to Z** (inclusive) only (9:05am-2:05pm).

**Siblings of the same family, but with differing last names, will be able to attend on the day of their siblings to keep families on the same day.*

 - All students will attend as of September 8th (9:05am-3:35pm).
- Staggered entry will provide our staff the opportunity to give additional attention to the reduced number of students present as they learn new procedures and protocols. It will also allow our staff to go through a relatively new scenario three times, which will help iron out any potential issues for the coming week.
- *Please bring a backpack with school supplies, your personally owned digital device (if you have one) and a water bottle on the first day you attend.*

Student Entry:

- When arriving at school (bus, drop-off and walk-in) students need to move to their designated collection pylon/circle. This will happen between 8:55 and 9:05 am.
- Each class will be collected by their first period teacher outside at their designated collection pylon and circle (*see map below*) and will bring them into their cohort classroom in the building, one cohort at a time.
- Students arriving after 9:05am need to go to the Main Entrance at the south end of our school and need to remain physically distanced as they wait to be admitted to check-in at the office. Lines will be marked outside to indicate appropriate distance.

Student Exit:

- Class cohorts will utilize fire exit doors for entry and exit of the building at all times. This will utilize all entry and exit doors to reduce traffic at any given door.
- Each cohort (class, 6-1 for example) will remain in their classroom space as assigned for the whole day, with the exception of some option locations and Physical Education.
- Please note that we will follow specific AHS guidelines related to foods, band, music and PE classes.
- Dismissal will occur with the cohort's last period teacher, who will bring the students outside for dismissal one class at a time.
- Grade 6 students will be dismissed first, grade 7s second and grade 8s last – all prior to 3:35pm to ensure that sufficient time is provided to board the buses by the designated 3:45pm departure time.

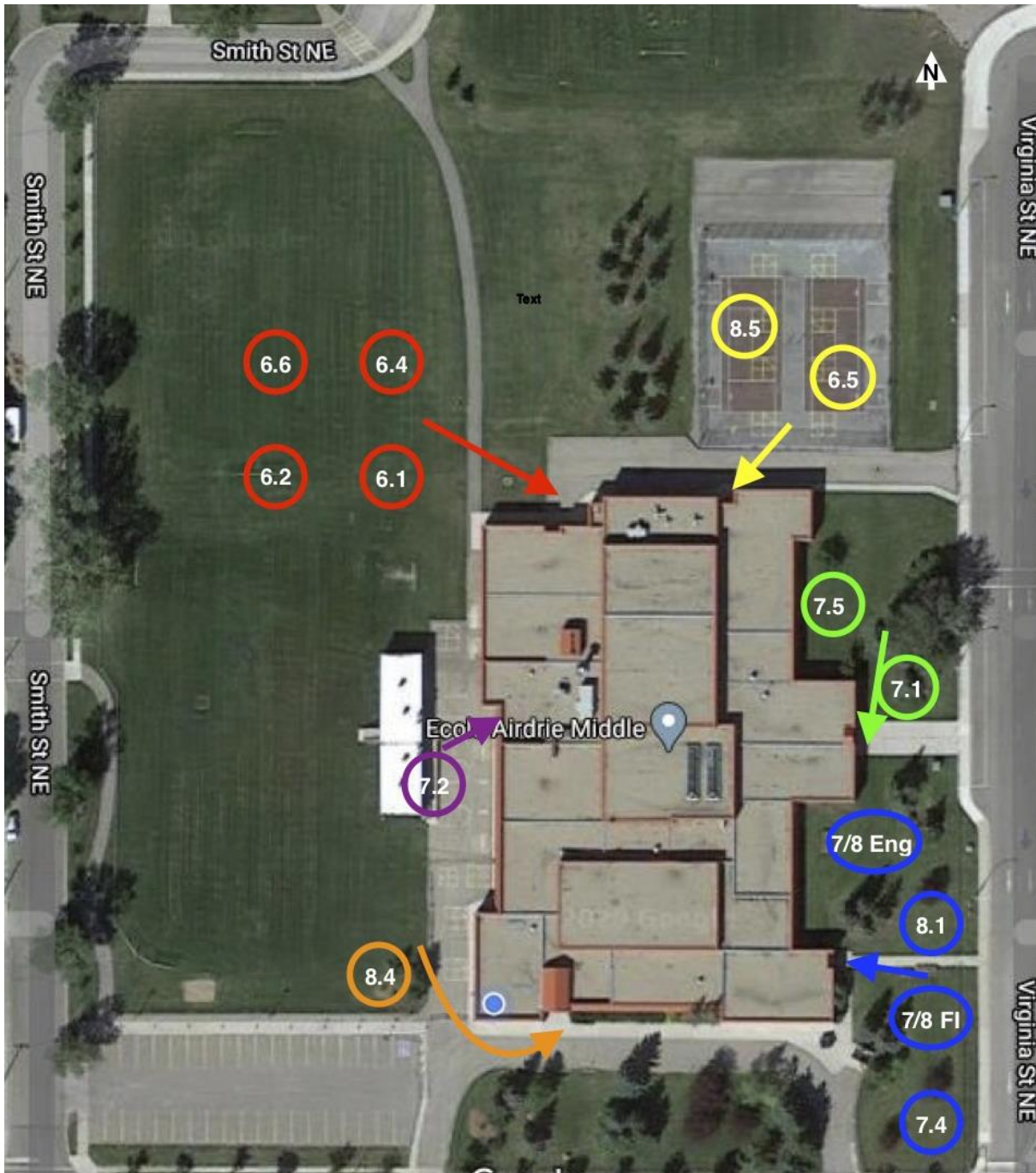
Parent/Guardian pick-up and drop off:

- Parents and guardians must remain off school grounds for drop off and pick up.
 - The drop-off loop on the south side of our building may be used for drop-off and pick-up.
 - Please be aware of your child's exit door when planning to pick up your child in the bus loop or on the street. It may be easier to secure parking closer to their exit door.

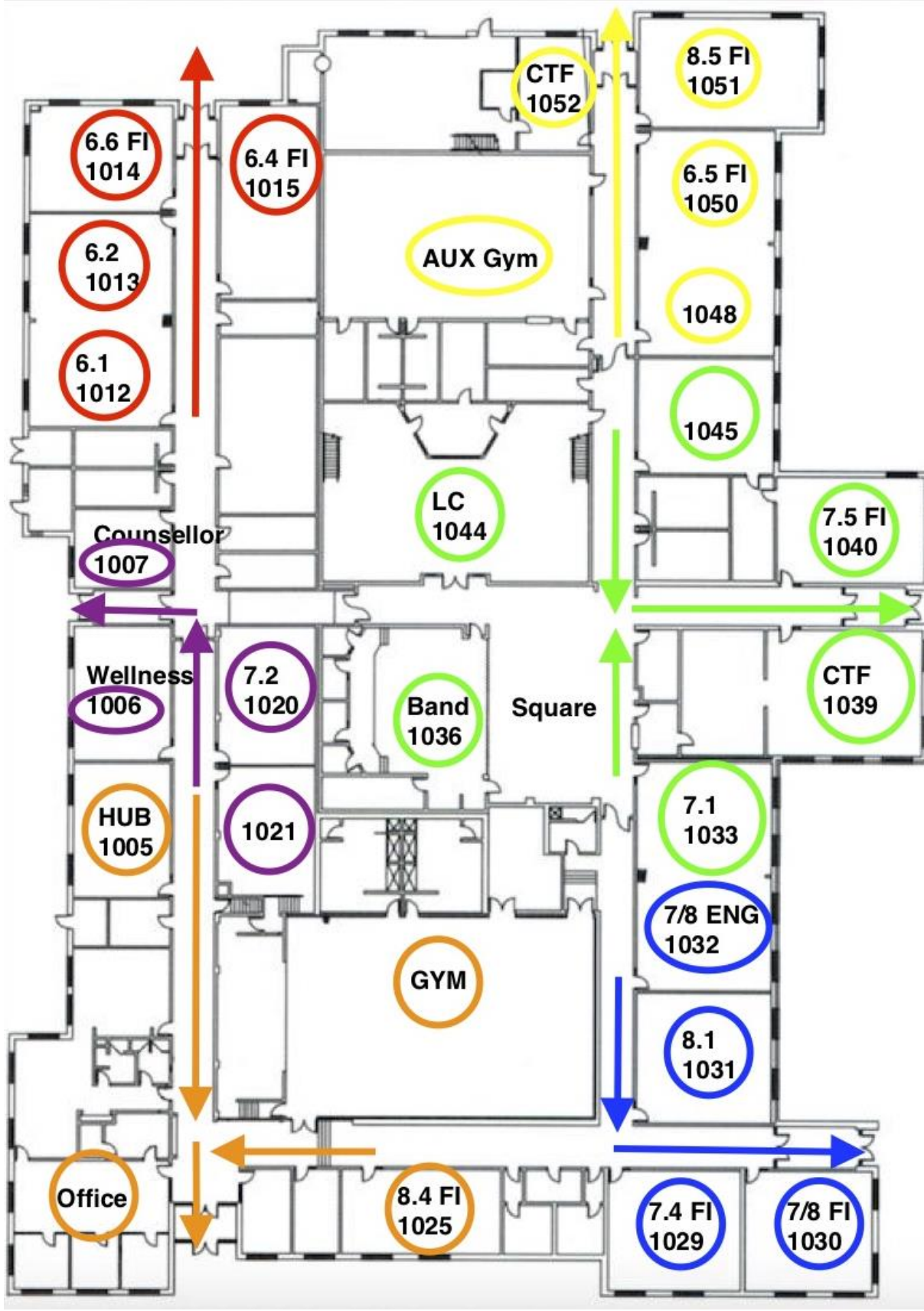
Walking traffic flow inside the school:

- Arrows will be placed on the floor and on walls to indicate the direction of traffic in hallways that must be followed.
- Due to the layout of our school and wanting to use as many entrances and exits as possible, we will have two-directional traffic in each hallway, clearly separated by arrows.
- The established directional flow of movement within the school must be followed.

EAMS – Cohort Entry/Exit Doors and Classroom Locations 2020-21



2020-21 Exits and Classroom Locations



Classroom Cohorts

- At this time, students will remain in their Homeroom/cohort class while inside the school building
- Students will remain in their designated cohort classroom with the exception of movement to some option specific classroom locations (ex. Music, shop) that will be sanitized between change of cohorts
- Teachers will rotate between classrooms rather than the students to reduce traffic flow in the building
- Lockers will not be available to students at this time
- Students will store personal belongings in their designated cohort classroom.
- Students are asked to bring their own supplies and encouraged to bring a personally owned digital device. Any school devices will be cleaned following RVS' device cleaning protocol.

Physical set up for classrooms:

- Desks will be assigned by the teacher. Students must adhere to these desk assignments for the entire day.
- Students may need to help with sanitizing their learning space throughout the day.
- We will remove furniture and items that are not essential in order to provide the maximum amount of space available for physical distancing.

Option Courses (Exploratories):

- Students will travel to course-specific option course locations. This will provide for some movement for students in our school.
- Option courses will be delivered in an **exploratory** format.
 - All students are exposed to all options/exploratories on a 2-cycle rotation with their class cohort.
 - This allows all options to be delivered to all students by the winter break.
 - This format maintains the class cohorts, as much as possible, while students are inside the school.
- Exploratories will begin in the second week of classes (week of September 8th on day 1) once students have been able to live with the protocols in place for a few days.
- We are committed to continuously assess this situation and move to a more traditional way of delivering options at some point in the future.
- Cleaning of student stations and materials will be part of the routine for options/exploratories where applicable.
 - Ex: Desks will be wiped down after a class uses a classroom for their option, before another cohort enters the classroom for a different class.

Washroom Use:

- Washroom capacity is three students at a time. Students need to use the washrooms closest to their classroom location. Students must adhere to wearing a mask and following proper hand washing routines.
- Should three students be present in the washrooms, students need to wait outside of the washroom for one student to exit before one student enters.

Water Fountains:

- Water fountains are shut off and cannot be
- Personal water bottles must be used:
 - Bottles can be filled at the bottle filling stations

Lunch Time & Recess Time:

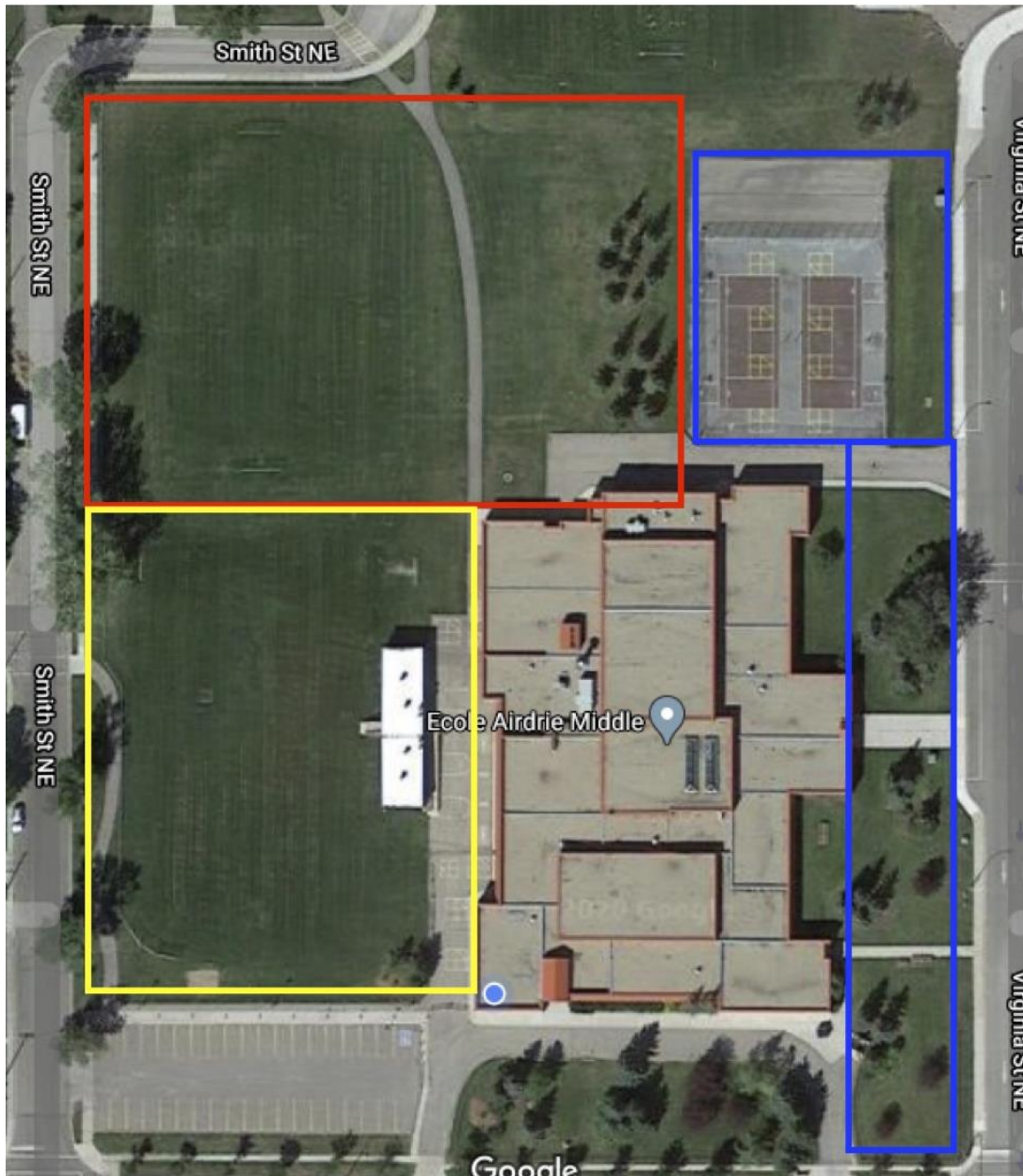
Students will eat in their classrooms at their stations.

- No food is to be shared amongst students.
- The students will have a 15-minute lunch eating period supervised by a teacher.
- Student stations will be cleaned before and after eating lunch.
- Microwave ovens will not be available (for health reasons)

We will then ask students to move outside to their grade specific area.

- We will rotate areas (*see map below*) so all students have access to differing spaces around our school.
 - Students will be supervised by a teacher while outside and encouraged to follow physical distancing guidelines.
 - All students are to be outside unless meeting with a staff member.
 - Grade 6 students will remain on campus.
 - Grade 7/8 students may select to leave campus for lunch (as has been practice in the past) once they have handed in their yearly parent consent form. It is accessible here and needs to be brought to your child's homeroom teacher as soon as possible: [Lunch Time Off Campus Consent Form](#)
- Indoor Recess will only occur at temperatures lower than -21°C (including windchill) or excessively heavy rainfall. Please ensure that students come to school dressed for the weather.

EAMS 2020-2: OutdoorRecess Location Map



Recess Rotation 2020-21

Location	Day 1	Day 2	Day 3	Day 4	Day 5	Day 6
Red (NorthWest)	6	8	7	6	8	7
Blue (East/NE Court)	7	6	8	7	6	8
Yellow (SouthWest)	8	7	6	8	7	6

Infirmery and protocol for students who may display symptoms associated with Covid-19:

We will have two spaces, to begin with, where students can receive help should injuries or Covid associated symptoms occur. Parent conducted daily health checks will help reduce this greatly.

- Our infirmery will remain the space where students can receive help for injuries such as bleeding noses, scrapes and bruises.
- One quarantine space will be available for students who may display symptoms of Covid-19. They will be isolated in this space and parents/guardians **must pick up** their child immediately.
- We have a second quarantine location to be made available should the need arise.
- We are currently not taking the temperatures of children in school.

Return to school after displaying symptoms associated with Covid-19:

For school re-entry to be successful, all students, families and staff must work together to minimize risks. One of the critical strategies is testing in order to determine if self-isolation needs to continue.

- Should anyone answer “Yes” to any of the daily health check questions, they are prohibited from entering the school. Your child must stay at home.
- Please use the [COVID-19 Self-Assessment Tool](#) to determine whether your child needs to be tested for COVID-19.
- Students can return to school when they have followed the Alberta Government’s requirements related to isolation.
- Documentation of a negative test is currently NOT required.

Contact with School Staff:

Meetings with staff should occur via email, telephone or zoom as much as possible. Contact info for our staff is available on our [website](#).

Where circumstances require a face to face meeting:

- An appointment must be set up ahead of time with the staff member in question.
- We will have offices with plexiglass shields available to facilitate those meetings. Masks must be worn and AHS protocols for in person meetings must be followed.

School Hours/Bell Schedule/Calendar:

- School Hours for Students:
 - Monday to Thursday: 9:05am-3:35pm
 - Friday: 9:05-2:05pm
- Bell Schedule on school website: <https://airdrie.rockyview.ab.ca/our-school/BellScheduleEAMS202021.pdf>
- Student Lunch Break:
 - Monday to Thursday: 11:59am-12:44pm (15 min eating inside, 30 min recess)
 - Friday: 11:12-11:57pm (15 min eating inside, 30 min recess)
- Day Rotation
 - EAMS runs on a 6-day cycle. Rotation calendar available here: <https://airdrie.rockyview.ab.ca/our-school/2020-21-calendar-6-day-cycle-rotational/view>

Yikes! I forgot my lunch!!

- If your child has forgotten their lunch, their device etc., please come to the office.
 - Please follow the posted AHS Health Protocols, sanitize your hands and put on a mask.
- Once in the building you will find a table in the office where you are able to leave your child's lunch or item.
 - Our office staff will ensure your child will be able to retrieve their lunch/item at an appropriate time or we will deliver it your child's class.

Additional Health and Safety Considerations:

- Masks need to be worn in school by all where physical distance cannot be maintained.
- Hand sanitizer stations will be present at all entries and exits of the building and near the door of all classrooms.
- Students will need to wash hands frequently, use hand sanitizer and help in the disinfection of their own workstations/desks.
- We are trying to be as scent free as we can:
 - Students and staff who may be using their own hand sanitizers and lotions should refrain from bringing strongly scented lotions into the school. Thank you for your attention to this potential allergen.
- Students are asked to bring their own supplies and encouraged to bring a personally owned digital device. Any school devices will be cleaned following RVS' device cleaning protocol.

Potential of Moving to Scenario 2:

- Should the Government of Alberta declare a need to move to a Scenario 2 situation where our students will be divided into two cohorts for separate attendance, we will follow an alphabetical decision that is shared amongst the tri-site schools:
 - Cohort A will be: Last names A to L
 - Cohort B will be: Last Names M to Z








**Siblings of the same family but with differing last names will be able to attend on the same day as their siblings.*




Potential of Moving to Scenario 3:

- In the first weeks of school, teachers will establish an online presence with their class in the event that the government moves us to Scenario 3.
- We encourage the use of personally owned digital devices for students to ensure a seamless transition to at-home learning should the need arise.

Appendix A - School Daily Practices

Ecole Airdrie Middle School

Time		Important Things to Remember
Before you leave for school		<ul style="list-style-type: none"> • Complete the Daily Health Check BEFORE you leave for school • If you answer YES to any questions please stay home, reach out to HealthLink and get cleared before returning to school • Bring your mask to school
Before entering the building		<ul style="list-style-type: none"> • Parents will need to wait off school property or in their vehicle • Put on your mask • Meet with your class in the designated area between 8:55 and 9:05 a.m. • Stay physically distanced apart – two metres • You will enter the school with a supervisor through your designated door
The start of classes – entering the building		
Hand sanitizing stations		<ul style="list-style-type: none"> • Use hand sanitizer and clean your hands as you enter the building • Sanitizer stations will be at the entrance of all classroom spaces as well
In the classroom		<ul style="list-style-type: none"> • Use hand sanitizer and clean your hands each time you enter a classroom • Wear your mask where physical distancing is not possible • Please sit in your designated spot respecting physical distancing where possible • Talk to your teacher if you need to leave the classroom for any reason • Use your own supplies and do not share your supplies with others
Hallways		<ul style="list-style-type: none"> • Follow the traffic flow designated for hallways and stairwells • Wear your mask • Please move swiftly from class to class • No hallway lockers will be used
Washrooms		<ul style="list-style-type: none"> • Ask your teacher if you need to use the washroom during class time • Students will be required to sanitize or wash their hands before and after using the washroom
Technology		<ul style="list-style-type: none"> • Please bring your own device if possible • Shared devices will be available but must be wiped and cleaned after use

<p>Lunch</p>		<ul style="list-style-type: none"> • Students will eat their lunch in their designated cohort classroom • Students will be asked to wipe down their desk before and after eating with provided cleaning supplies • Students will be required to sanitize their hands before and after eating • Wear your mask when not eating if physical distancing is not possible • Please do not share food or utensils • Student use microwaves is not allowed
<p>Recess/ Breaks</p>		<ul style="list-style-type: none"> • Students will exit and enter for recess using their designated door • Please stay in your designated recess area based on the rotating schedule • Please meet your teacher at your designated cohort collection area at the end of recess • Supervisors will encourage students to maintain physical distancing while on break • Teachers will provide snack break during class time. Please follow sanitizing procedures as you would during lunch. • Students will spend the majority of the day in their cohort classroom to reduce the volume of students transitioning at once • Students will travel as a cohort to specific rooms for specialized options and PE as directed by the teacher
<p>The end of the day – exiting the building</p>		
<p>Exiting the building</p>		<ul style="list-style-type: none"> • Students will sanitize their hands as they leave the classroom and head directly out of the building using the nearest exit as directed by their teacher • Cohorts will be staggered as they exit the building with staff direction • Students waiting for pickup will go to their parent-arranged pick up area closest to their designated exit door • Parents will need to wait off school property or in their vehicle • Students will wait for the bus at the Town & Country Centre bus area while maintaining physical distancing • Students will wear their mask on the way to the bus and on the bus

- Please note masks are required for all staff and students Gr. 4 – Gr. 12.